

# Epicor XL Connect

**Pete Reynolds**

Global Channel Director, insight software

**Szabolcs (Sabi) Ecsedi**

Product Marketing Manager for Finance, Epicor

Customer Webcast, Americas region, April 1, 2020



# Should You Have Any Questions...

- ▶ This webcast is being recorded
- ▶ Your lines are muted during the presentation
- ▶ Please enter your questions in the Q&A window any time during the webcast
- ▶ At the end of this session we will discuss some of the questions

# Safe Harbor Statement

**FORWARD-LOOKING STATEMENTS.** Some of the information in the presentations constitute forward looking information, including with respect to future product strategies, financial condition, results of operations, continued profitability and activities of Epicor. While these forward-looking statements represent our current judgment, these statements are based on assumptions that are subject to a wide range of risks and our actual results could differ materially. Epicor undertakes no obligation to revise or update publicly any forward-looking statements.

# Agenda

## Introduction

## Reporting challenges in the New Now

- *Why reporting is more important than ever and what reports you should be looking at*

## Leveraging pre-built reports

- *See how pre-built report templates can provide rapid time to value and instant data access in these uncertain times*

## Enabling remote workers

- *Enable remote workers with self-service access to data and automated report distribution*

## Live demo

## Next Steps

## Q&A



# Reporting Challenges in the *New Now*

Get a handle on costs in the short term while answering new questions that arise in the coming weeks

- ▶ Increased demand on finance teams for quick answers to changing business conditions
  - Real-time data access is critical
  - More frequent reporting cadence is necessary
  - Drill-down capability is necessary
- ▶ Increased demand for ad-hoc reporting and “What-If”/ Scenario Planning
- ▶ Ability to enable remote workers
  - Need for self-service data access and less dependency on IT
  - Automated report distribution is key



## How Can Epicor XL Connect Help?



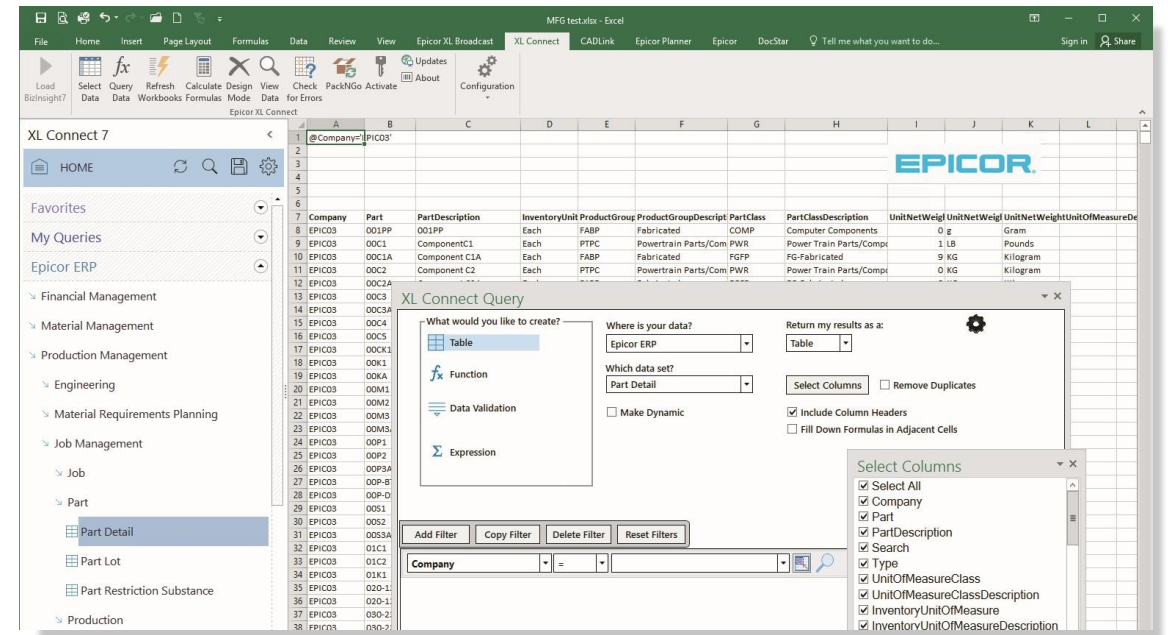


# Epicor XL Connect



**BizNetsoftware®**  
an insightsoftware company

- ▶ Out-of-the box functions that work with Excel
- ▶ Present information as you wish – full flexibility with formatting in Excel
- ▶ No need to be able to know database tags or be IT savvy in order to create reports
- ▶ Rapid report generation with in-memory data caching





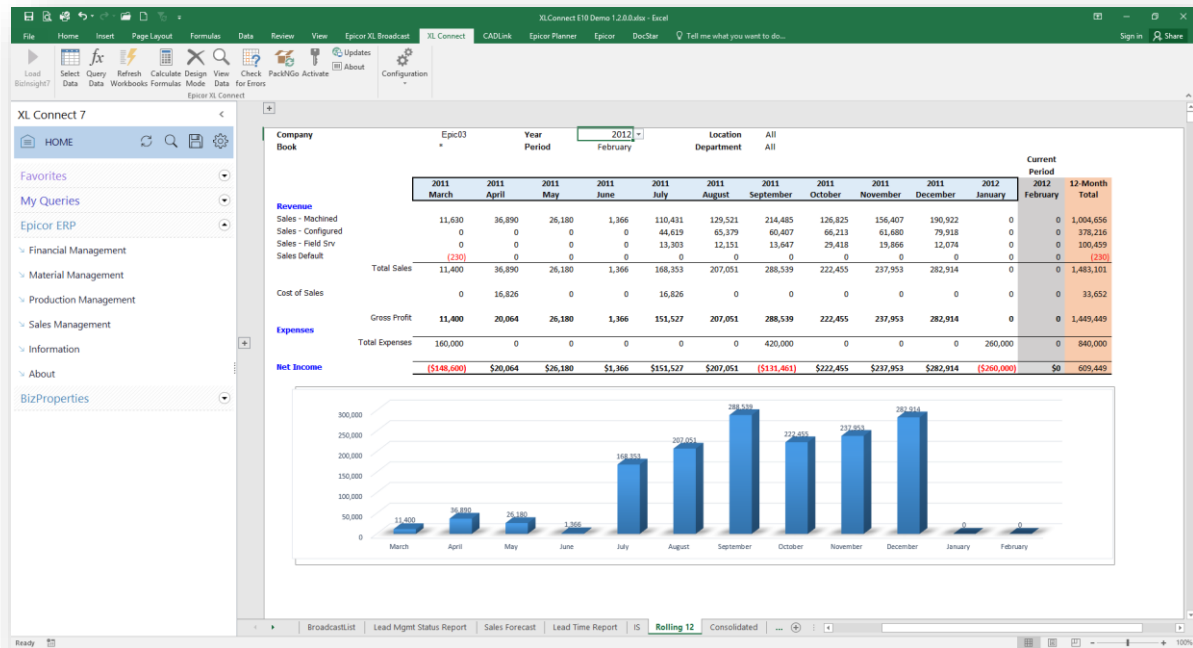
# Leveraging Pre-built Reports

# The Reports You Need to be Looking At

Utilize pre-built report templates for critical reports to realize rapid time to value out-of-the-box

- ▶ **Rolling Cash Flow Statement** – Provide cash balance visibility on the next key reporting date
- ▶ **Payables Aging** – Easily monitor when debtor liabilities are falling due
- ▶ **Receivables Aging** – Manage cash flow y forecasting future collections
- ▶ **Vendor Analysis** – See actual spend by supplier in real-time
- ▶ **Receivables Applied Receipts** – Track customer receipts to ensure collections are on schedule
- ▶ **Inventory Analysis** – Easily gain insight into on-hand inventory and turnover

# Pre-built Reports



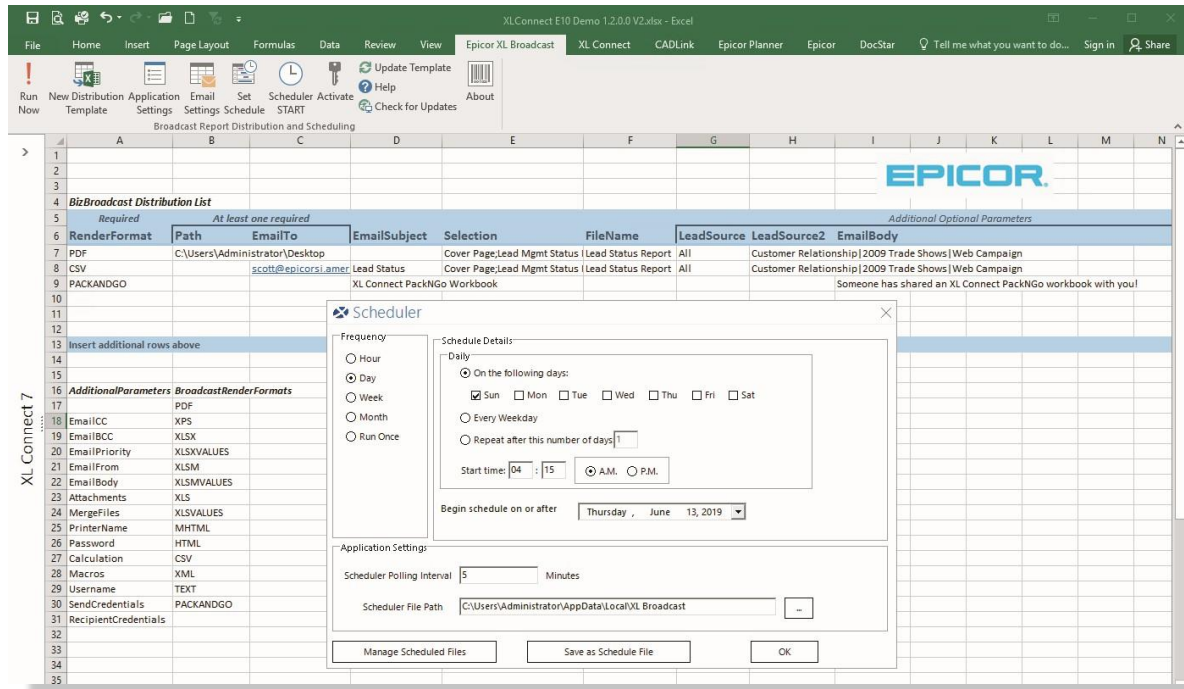
- ▶ No Longer just Financial! Includes all Epicor data
  - Prebuilt connections to 20 Epicor ERP modules
  - **45 out-of-the-box reports** for Financial, Sales, Production, and Material Management

# Enabling Remote Workers

# Enable Remote Workers

Access the right data, anywhere by enabling remote workers with self-service data access and automated report distribution

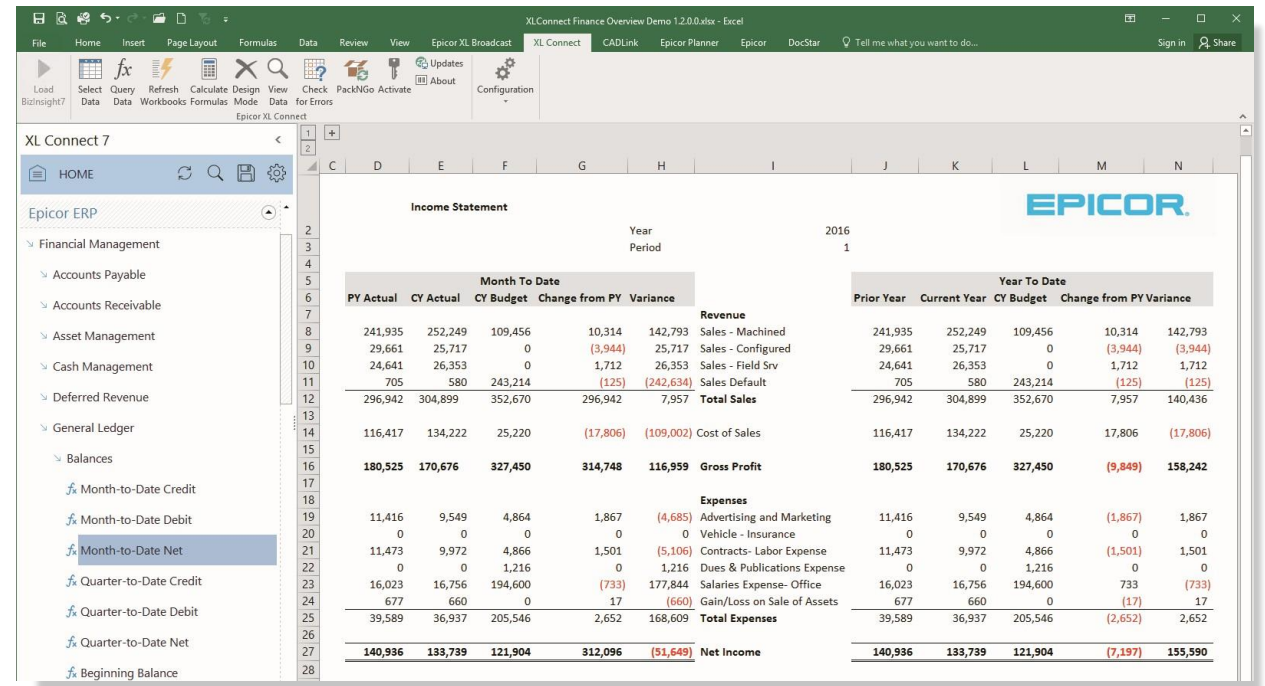
- ▶ **PackNGo** feature gives fully functional XL Connect 7 reports even offline
- ▶ **Broadcast reports** in a variety of formats and frequency



# Enable Remote Workers

Access the right data, anywhere by enabling remote workers with self-service data access and automated report distribution

- ▶ Every user is a report designer
- ▶ User/group based security model
- ▶ Customize XL Connect 7 in-memory caching for greater performance
- ▶ **Create XL Connect 7 reports utilizing any Excel data source**
  - BAQ REST API, CSV, ODBC and more
- ▶ Every user can create new custom XL Connect 7 functions



The screenshot displays the XL Connect 7 interface within an Excel environment. The main window shows an Income Statement report for the year 2016. The report is structured with columns for PY Actual, CY Actual, CY Budget, Change from PY, and Variance. The report includes sections for Revenue, Expenses, and Total Sales/Expenses. The Epicor ERP sidebar is visible on the left, showing a navigation menu with options like Financial Management, Accounts Payable, Accounts Receivable, Asset Management, Cash Management, Deferred Revenue, General Ledger, and Balances. The report data is as follows:

Month To Date					Year To Date				
PY Actual	CY Actual	CY Budget	Change from PY	Variance	Prior Year	Current Year	CY Budget	Change from PY	Variance
<b>Revenue</b>									
241,935	252,249	109,456	10,314	142,793	241,935	252,249	109,456	10,314	142,793
29,661	25,717	0	(3,944)	25,717	29,661	25,717	0	(3,944)	(3,944)
24,641	26,353	0	1,712	26,353	24,641	26,353	0	1,712	1,712
705	580	243,214	(125)	(242,634)	705	580	243,214	(125)	(125)
296,942	304,899	352,670	296,942	7,957	296,942	304,899	352,670	7,957	140,436
<b>Total Sales</b>									
116,417	134,222	25,220	(17,806)	(109,002)	116,417	134,222	25,220	17,806	(17,806)
<b>Cost of Sales</b>									
180,525	170,676	327,450	314,748	116,959	180,525	170,676	327,450	(9,849)	158,242
<b>Gross Profit</b>									
<b>Expenses</b>									
11,416	9,549	4,864	1,867	(4,685)	11,416	9,549	4,864	(1,867)	1,867
0	0	0	0	0	0	0	0	0	0
11,473	9,972	4,866	1,501	(5,106)	11,473	9,972	4,866	(1,501)	1,501
0	0	1,216	0	1,216	0	0	1,216	0	0
16,023	16,756	194,600	(733)	177,844	16,023	16,756	194,600	733	(733)
677	660	0	17	(660)	677	660	0	(17)	17
39,589	36,937	205,546	2,652	168,609	39,589	36,937	205,546	(2,652)	2,652
<b>Total Expenses</b>									
140,936	133,739	121,904	312,096	(51,649)	140,936	133,739	121,904	(7,197)	155,590
<b>Net Income</b>									



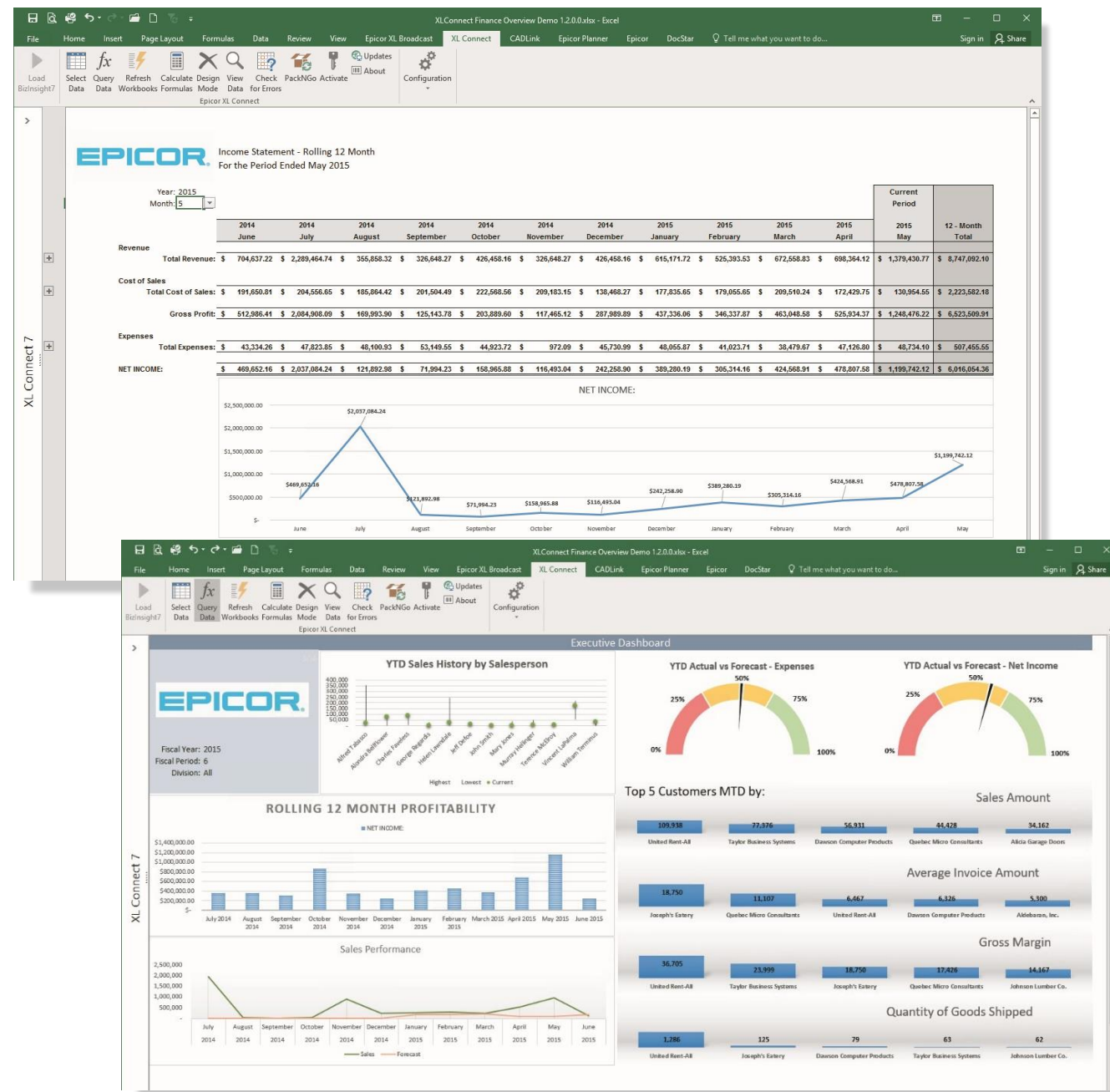
*“We’ve been able to do our financials in 20 seconds. Don’t tell my boss though, because I still tell her it’s three days!”*



# Live Demo

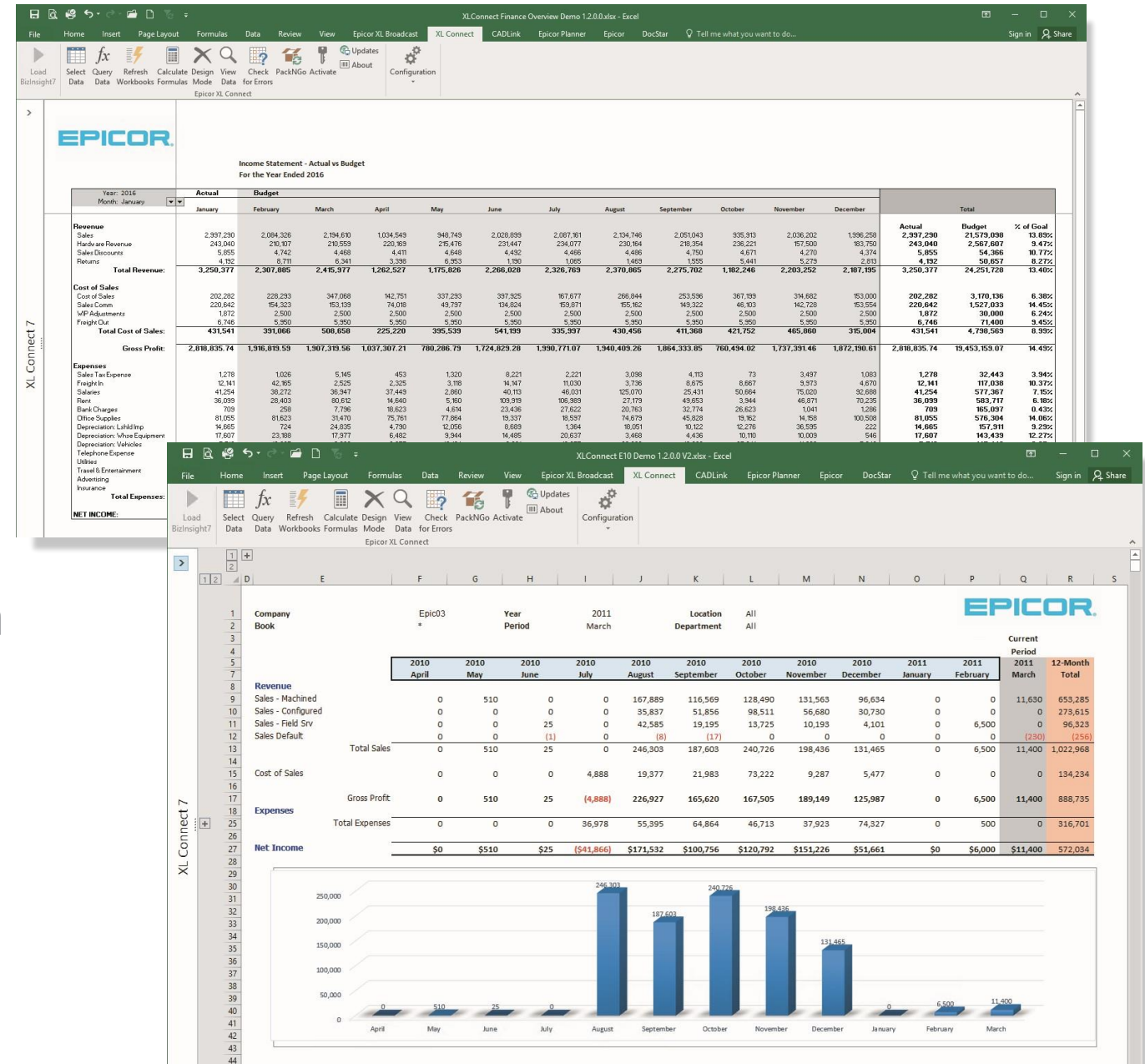
# Key Capabilities

- ▶ 100% compatible with Excel (add-in)
- ▶ Direct access to:
  - Epicor ERP data
  - External data sources
- ▶ Drag-and-drop report creation
  - Functions
  - Analysis sets
- ▶ Self-service report creation



# Key Capabilities

- ▶ Leverage existing spreadsheets
- ▶ Consolidate companies from different databases
- ▶ Multi-dimensional drill-down
- ▶ Supports
  - Pivot tables
  - Custom calculations
  - Charts



# User Types

# Epicor XL Connect 7 User Types

## ▶ Live User

- Full access to Epicor ERP data and can leverage multiple data sources
- Includes built-in features that automatically create PivotTables for detailed analysis
- Can package an arbitrary data set and distribute to remote users via PackNGo

## ▶ Remote User

- Create their own ad-hoc reports, functions and analysis based on data allowed to them
- Drilldown and view the details behind the numbers
- Access to their data anytime, anywhere with fully interactive reports - even if offline

## ▶ Broadcast

- Automated delivery of entire workbooks or designated worksheets to one or many recipients via e-mail, file folder, Microsoft SharePoint



# Epicor XL Connect 5 to 7 Migration Path

## Epicor XL Connect 5

<b>Starter Pack</b> 1 Designer, 2 Power, 4 Drilldown
Designer User
Power User
Drill Down User
AR Content Pack AP Content Pack MC Content Pack XL Connect Developer

## Epicor XL Connect 7

	Licence	Maintenance
3x Live	50% off SLP	20% SLP
4x Remote	100% off SLP	20% SLP
Live User	50% off SLP	20% SLP
Live User	50% off SLP	20% SLP
Remote User	100% off SLP	20% SLP
N/A	N/A	N/A
N/A	N/A	N/A
N/A	N/A	N/A
N/A	N/A	N/A

# Next Steps

# Resources

- ▶ [Landing page](#)
- ▶ [Interactive Demo](#)
- ▶ [BAQ & REST API Webinar](#)
- ▶ [Fact Sheet](#)
- ▶ [Fact Sheet on Broadcast user](#)

## Videos:

- ▶ [Feature Spotlight – PackNGo](#)
- ▶ [Self-service Business Intelligence & Reporting](#)
- ▶ [Epicor XL Connect 7 for Analysts](#)
- ▶ [Epicor XL Connect 7 Demo](#)
- ▶ [Questions Answered with Excel Connect 7](#)

## Customer Success videos:

- ▶ [Axelgaard Manufacturing](#)
- ▶ [Jamco America](#)
- ▶ [Baxter Manufacturing](#)
- ▶ [Heath Consultants](#)

## Did You Know?

Epicor Learning Center has 10 Training on Demand Videos to help you master Epicor XL Connect

**Epicor University**  
Knowledge is power | Unlock your potential

# Questions and Answers

Please enter your questions in the Q&A window





# Thank You!

**Contact your Epicor Customer Account Manager  
for further details!**

**Ask for a PDF copy of this presentation!**

