

Epicor Financial Planner (EFP)

Håkan Ebersjö
CCO, DSPanel

Szabolcs (Sabi) Ecsedi
Product Marketing Manager for Finance, Epicor

April 2, 2020
Customer Webcast | Americas



Should You Have Any Questions...

- ▶ This webcast is being recorded
- ▶ Your lines are muted during the presentation
- ▶ Please enter your questions in the Q&A window any time during the webcast
- ▶ At the end of this session we will discuss some of the questions

Safe Harbor Statement

FORWARD-LOOKING STATEMENTS. Some of the information in the presentations constitute forward looking information, including with respect to future product strategies, financial condition, results of operations, continued profitability and activities of Epicor. While these forward-looking statements represent our current judgment, these statements are based on assumptions that are subject to a wide range of risks and our actual results could differ materially. Epicor undertakes no obligation to revise or update publicly any forward-looking statements.

Agenda

Introduction

Functional deep-dive

New features

Live demo

Content packs / Trial license

Next steps

Q&A



Epicor Financial Planner (EFP)



- ▶ Add-on product to Epicor ERP
- ▶ Financial budgeting, planning, forecasting, and follow-up
 - AR & AP, Advanced consolidation
 - Customer/Product budgeting
- ▶ MS Excel add-in + web-based

SalesPriceUpdate_A_Lombardi (Read-Only) - Excel

File EFP-Input DemoBudget_1_4 Model: Sales User: dspcanvas/administrator Responsible: Herve Approver: Hakan Status: In Progress Versioning: Spreading Comments Submission Send Refresh Close Report

Sales - Budget - 2015 - Round 1 - Alfredo Lombardi

Version - V01 - Initial Version

Unit Price	Currency	Jan 2015	Feb 2015	Mar 2015	Apr 2015	May 2015	Jun 2015	Jul 2015	Aug 2015	Sep 2015	Oct 2015	Nov 2015	Dec 2015
Catalytic converter For 2 Sport convertible	EUR	357	357	357	357	357	357	357	357	357	357	357	357
Rear quarter panel For Matzia Hybrid	EUR	2,693	2,693	2,693	2,693	2,693	2,693	2,693	2,693	2,693	2,693	2,693	2,693
Rims For Atza Hybrid	EUR	210	210	210	210	210	210	210	210	210	210	210	210
Brake For Tiger	EUR	440	440	440	440	440	440	440	440	440	440	440	440
Filip-front For Tiger	EUR	1,180	1,180	1,180	1,180	1,180	1,180	1,180	1,180	1,180	1,180	1,180	1,180
Brake For Short bed	EUR	405	405	405	405	405	405	405	405	405	405	405	405
Rear quarter panel For One ton 2 seat	EUR	2,346	2,346	2,346	2,346	2,346	2,346	2,346	2,346	2,346	2,346	2,346	2,346
Alarm For 1.5 ton dual wheel	EUR	220	220	220	220	220	220	220	220	220	220	220	220
GPS For 1.5 ton dual wheel	EUR	95	95	95	95	95	95	95	95	95	95	95	95
Transmission For 10 ton Closed bed	EUR	627	627	627	627	627	627	627	627	627	627	627	627
Brake For 5 ton Open bed	EUR	305	305	305	305	305	305	305	305	305	305	305	305
Brake For 10 ton Closed bed	EUR	326	326	326	326	326	326	326	326	326	326	326	326

My Page

Journal

EPICOR

Financial Planner

Global Admin (as MAHE2.scott)

Division 00 (Budget) - Controller

+

Sum: 23,300

Comments

Workflow

Cell Info

Workflow for

Current selection D5:H7

This sheet

Now in State

Input/Adjust Budget (15)

Change to

Rejected

For Approval

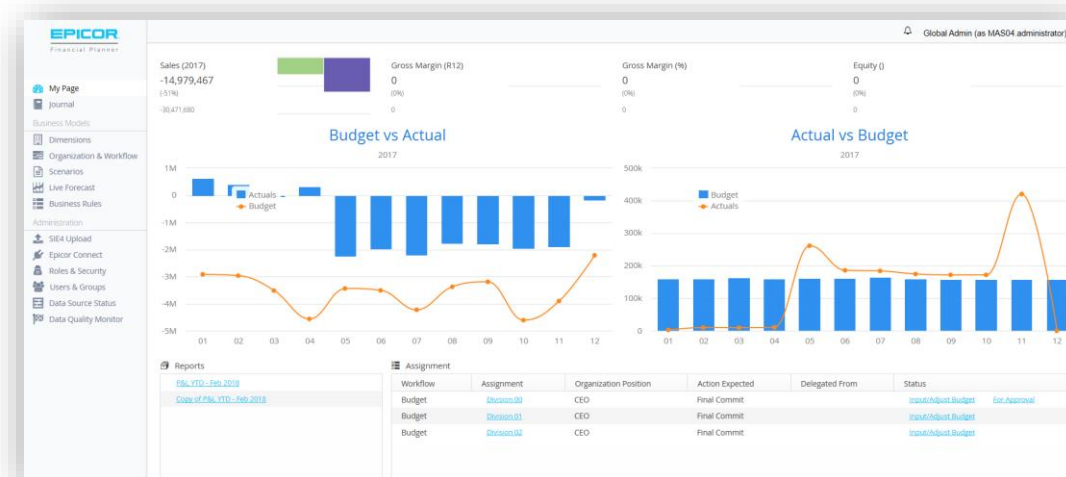
Apply Workflow Change

	Budget Value	Jan 2015	Feb 2015	Mar 2015	Apr 2015	May 2015	Jun 2015	Jul 2015	Aug 2015	Sep 2015	Oct 2015	Nov 2015	Dec 2015	Budget	Actual PY	Variance PY
6950-Cash Receipts Discounts	27,101	1,501	1,500	1,500	1,500	1,700	2,000	2,100	2,400	2,900	3,100	3,700	3,600	27,101	27,101	
6400-Bad Debt Expense	40,666	37,601	100	300	200	200	200	5,666	-100	-400	-700	-900	-400	40,666	40,666	
6450-Bank Fees and Charges	8,000	800	800	200	300	800	400	500	700	1,100	1,400	1,100	1,100	8,000	8,000	
6460-Bank Reconciliation Variance	18,900	1,000	1,800	1,600	1,500	1,300	1,000	1,800	1,800	2,000	2,000	1,800	1,800	18,900	18,900	
6470-Loss on NSF Checks	17,500	1,800	1,900	1,600	1,500	1,300	1,000	1,400	1,600	1,300	1,400	1,300	1,300	17,500	17,500	
6480-Dues & Publications Expense	21,500	1,900	1,900	1,700	1,400	1,700	2,000	1,900	2,100	2,000	1,700	1,500	1,700	21,500	21,500	
8000-Maintenance Expense	17,600	1,800	1,700	1,400	1,600	1,100	1,400	1,200	1,300	1,400	1,300	1,600	1,400	17,600	17,600	
8050-Meals and Entertainment	8,400	500	500	500	500	500	400	600	700	1,100	800	1,100	1,200	8,400	8,400	
8100-Office Expense	20,000		2,000	2,000	6,000	2,000	2,000	6,000						20,000	20,000	
8200-Payroll Tax Expense	800	2,400	1,200	600	900	-900	-900	-900	-900	-900	-900	-900	-900	800	800	
8300-Other Taxes	16,900	800	1,000	1,100	1,300	1,300	1,400	1,700	2,000	1,600	1,900	1,400	1,600	16,900	16,900	
8400-Telephone Expense	22,200	1,600	1,400	1,900	1,600	1,900	2,300	2,100	1,800	2,000	2,000	2,200	2,000	22,200	22,200	
8500-Travel-Trans and Lodging	26,100	1,600	1,600	1,600	1,500	1,600	2,100	2,500	2,700	2,600	2,900	2,900	2,900	26,100	26,100	
8550-Training Expense	49,000		3,333	4,000	3,975	5,299	5,299	5,299	5,99	5,299	5,299	5,299	5,299	49,000	49,000	
8600-Salaries Expense-Office	6,300	1,000	800	800	700	900	700	400	100	200	-100	800	500	6,300	6,300	
4066-Sales-Measured Work	16,700	1,700	1,700	1,400	1,200	1,400	1,100	800	1,200	1,400	1,600	1,600	1,600	16,700	16,700	
4067-Sales-Actual Burden	18,100	1,500	1,700	1,400	1,600	2,200	1,800	1,400	1,100	1,300	1,500	1,700	1,100	18,100	18,100	
4068-Sales-Project Fees	13,000	1,200	1,600	1,300	1,400	1,400	1,500	1,200	900	800	700	900	500	13,000	13,000	
4069-Sales-Project ODC	13,000	1,250	1,250	1,250	1,250	1,250	1,250	1,250	1,250	1,250	1,250	1,250	1,250	13,000	13,000	
4091-Sales-Role Labor	-8,100	-100	-600	-700	-900	-900	-700	-900	-700	-900	-1,000	-800	-1,100	-8,100	-8,100	
4092-Sales-Subcontract	7,100	500	400	700	900	600	800	1,000	700	500	200	500	700	7,100	7,100	
4093-Sales-Recognized	-8,000	-100	-100	-400	-800	-800	-600	-700	-1,000	-700	-900	-1,000	-900	-8,000	-8,000	
4094-Sales-Provisional Burden	12,300	700	800	1,100	800	900	900	1,300	1,000	900	1,000	1,300	1,600	12,300	12,300	
6010-Advertising and Marketing	18,500	1,800	2,100	2,100	2,100	1,600	1,800	1,500	1,400	1,200	1,200	800	600	18,500	18,500	
6011-Marketing Material (Samples)	9,700	1,200	1,400	1,500	1,600	1,300	1,000	700	600	300	-100	200	900	9,700	9,700	
6012-Marketing Campaign Collateral	19,500	500	900	900	1,200	1,800	2,000	1,700	1,400	2,100	2,100	1,600	1,900	19,500	19,500	
6013-Marketing Travel Cost	9,700	500	800	500	700	1,000	900	1,100	900	700	900	900	900	9,700	9,700	
6014-Marketing Brand Costs	21,500	800	1,200	1,200	1,400	1,400	1,900	2,000	2,400	2,100	2,500	2,300	2,300	21,500	21,500	
6050-Commissions and Fees Expense	18,900	1,300	1,600	1,600	1,600	1,700	1,500	1,600	1,800	1,600	1,600	1,500	1,500	18,900	18,900	
6050-Default Purchase Expense	25,200	1,300	1,800	1,500	1,600	1,900	2,300	2,100	2,400	2,100	2,600	2,800	2,500	25,200	25,200	
6635-Freight Recovery	2,400	400	200	100	-200	200	300	200	100	-200	100	400	200	2,400	2,400	

Problem Areas where EFP Helps

Manual handling of budget/forecast in Excel

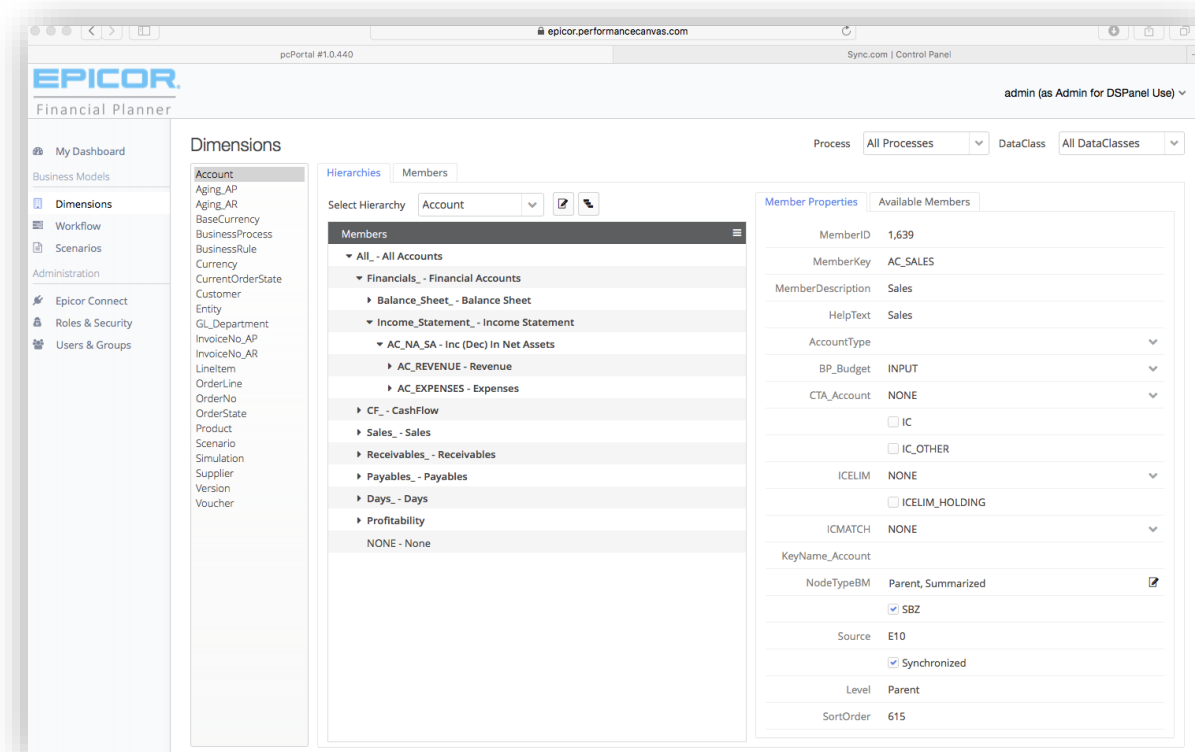
- ▶ Easy to get errors in formulas, hard to trace
- ▶ Hard to aggregate multiple departments
- ▶ Hard to handle numerous versions
- ▶ Processing of comments over time
- ▶ Challenging to collaborate with the same budget/forecast
- ▶ Missing traceability in numbers and business flow
- ▶ Security risks at different levels
- ▶ Person dependent system/process



The screenshot displays the EPICOR Financial Planner 'Live Forecast' configuration screen. It is divided into two main sections: 'Current cycle' and 'Next cycle'. The 'Current cycle' section has fields for 'From Date' (2018-01), 'To Date' (2018-12), and 'To Closed Date' (2018-04). Below these are three radio buttons: 'Free (Input without Workflow)', 'Structured (Input with Workflow)', and 'Locked (No input allowed)'. The 'Next cycle' section has fields for 'From Date' (2018-01), 'To Date' (2018-12), and 'Closed Date' (2018-04). Below these are three radio buttons: 'Free', 'Structured', and 'Closed'. There is a 'Set to Workflow State' dropdown menu with options: 'Input/Adjust Forecast', 'For Approval', and 'Approved'. A checkbox 'Copy before cycle change' is checked. At the bottom, there is a 'Switch to Next Forecast Cycle' button and 'Cancel' and 'Save' buttons.

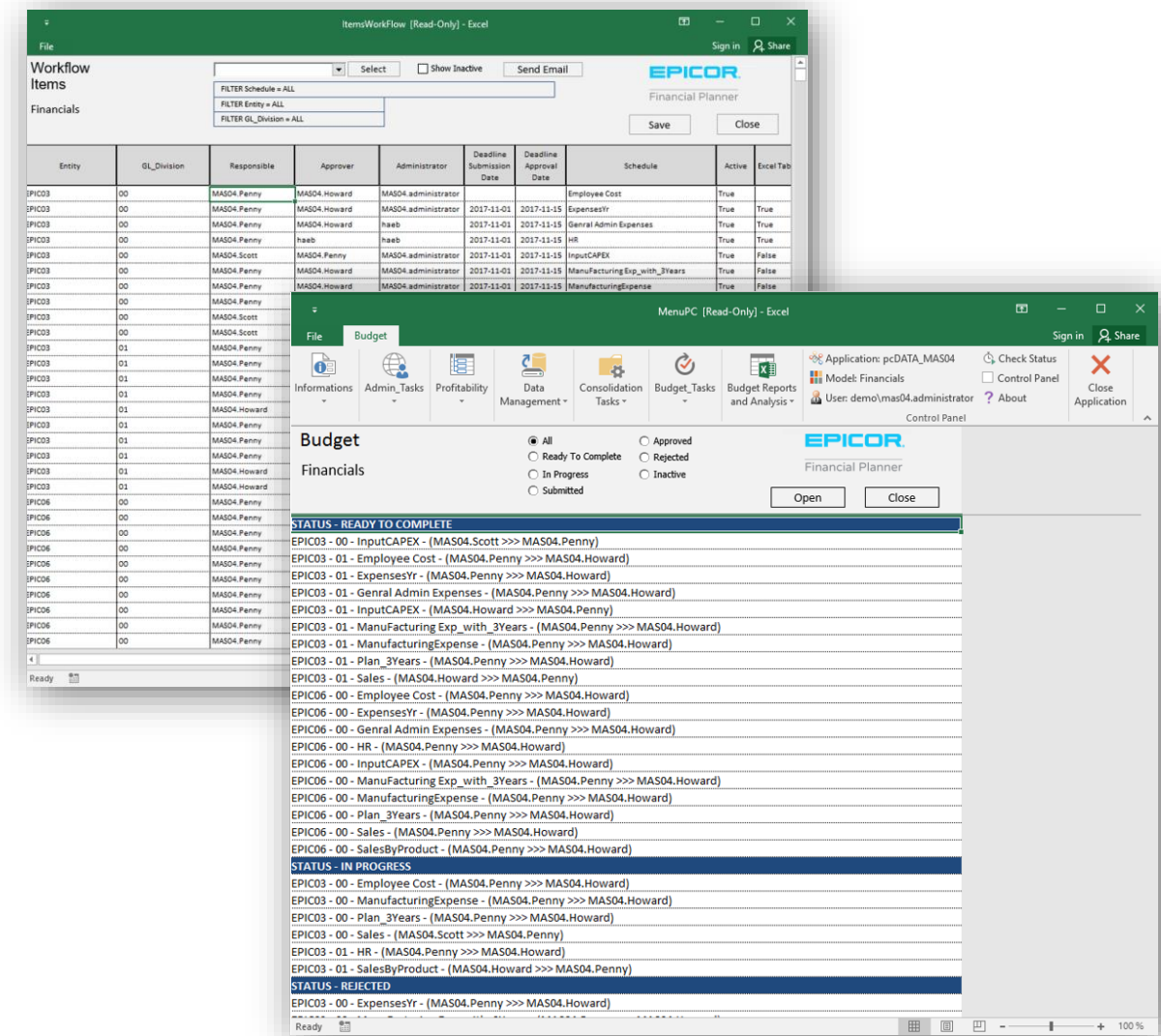
Why EFP?

- ▶ Releases time for the finance team with more effective processes and automation of Budget/Forecasting
 - Best practices for automation processes
- ▶ User-friendly web UI or Excel
 - Web - focuses on usability for the finance team and the budget approvers
 - Excel – Known interface with a focus on finance
- ▶ Reduces cost, due to that your team can focus on the standard tasks
- ▶ One platform for the entire process with different interface selections for each user
- ▶ One business flow
- ▶ The simple flow of information through the organization
 - Integration of multiple ERP's or source systems



Why do customers select EFP?

- ▶ Delivers relevant and correct information in time to the organization
- ▶ Reduces the time dramatically for reporting and consolidation
 - Report templates with drag & drop wizard
 - Automatic consolidation
- ▶ Handles complex business models
 - Finance teams that may not be satisfied with their current solution or have business needs arise and they have outgrown their current solution
- ▶ Easy to collaborate
 - One truth within the entire organization



Good to Know about EFP!

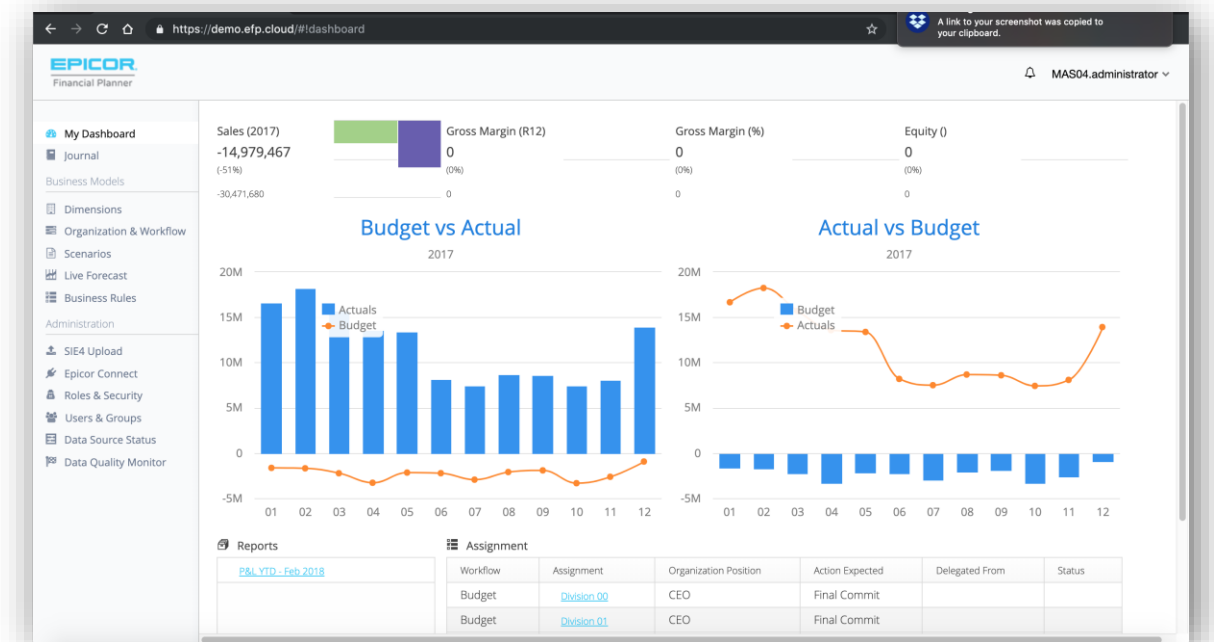
EFP is always

- Multi-company, multi-currency, multi-system, and multi-scenario
- Faster FP&A processes
- Standardized finance logic – cash flow, CAPEX, consolidation, what if scenarios
- Excel is the only application needed on the client
- Automatic updates for EFP cloud
- Subscription-based pricing

Functional Deep-Dive

My EFP Page

- ▶ Quick Overview of your tasks
- ▶ Instant View of your main measures for the budget process
- ▶ Key reports
- ▶ Task-driven and Personal



EFP in the *New Now*

- ▶ Use EFP standard cash flow rule and reporting to get instant overview of your situation
- ▶ Use Excel from home without the need of VPN and still have full secure access
- ▶ Use commentary in cash flow reports to collaborate quicker around numbers
- ▶ Use scenario simulation instantly, to see immediate impact on your business

Budget and Forecast Entry

- ▶ Enter numbers with spread factor
- ▶ Enter a number with a formula
- ▶ Instant rollup
- ▶ Simple and fast approval process
 - No need to reject all numbers
 - Select numbers to be approved
 - After submission, approve some of the numbers and reject selected numbers
 - Simplified workflow process

EPICOR Financial Planner

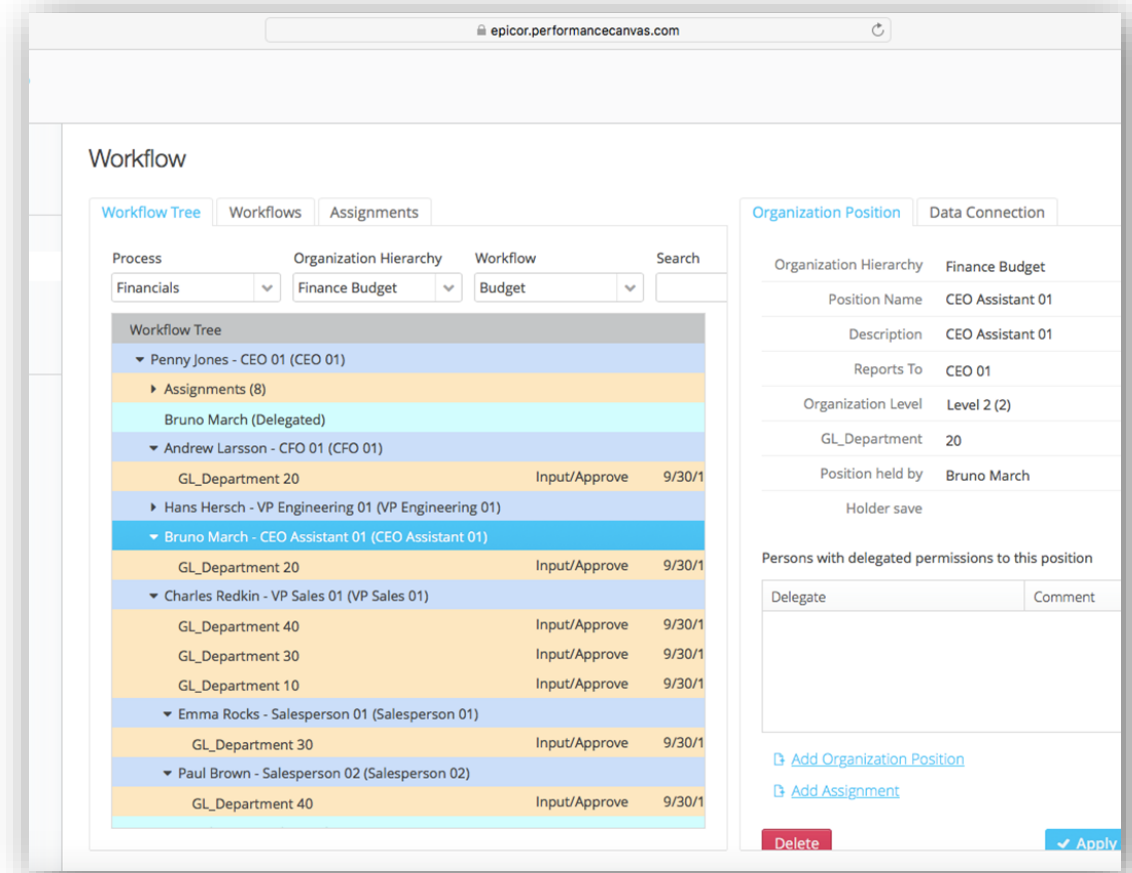
Division 00 (Budget) - Controller

	Budget Value	Jan 2018	Feb 2018	Mar 2018	Apr 2018	May 2018	Jun 2018	Jul 2018	Aug 2018	Sep 2018
6350 - Cash Receipts Discounts	27,100	1,500	1,300	1,500	1,300	1,700	2,000	2,100	2,400	2,900
6400 - Bad Debt Expense	-2,501	100	100	300		200	200		-300	-600
6450 - Bank Fees and Charges	8,000	500	300	200	300	300	400	500	700	1,100
6460 - Bank Reconciliation Variance	18,900	1,000	1,900	1,600	1,500	1,300	1,000	1,800	1,700	1,800
6470 - Loss on NSF Checks	17,500	1,800	1,900	1,600	1,500	1,300	1,000	1,400	1,400	1,600
6480 - Dues & Publications Expense	21,500	1,900	1,900	1,700	1,400	1,700	2,000	1,900	2,100	2,000
8000 - Maintenance Expense	17,600	1,800	1,700	1,400	1,600	1,100	1,400	1,200	1,300	1,400
8050 - Meals and Entertainment	8,400	500	500	500	500	500	400	600	700	1,100
8100 - Office Expense	12,668			965	4,511	609	974	730	1,096	1,583
8200 - Payroll Tax Expense	600	2,400	1,200	600	-300	-300		-900	-600	-900
8300 - Other Taxes	16,900	800	1,000	1,100	1,300	1,300	1,400	1,400	1,700	2,000
8400 - Telephone Expense	22,200	1,600	1,400	1,900	1,600	1,900	2,300	2,200	1,800	1,700
8500 - Travel - Trans. and Lodging	26,100	1,600	1,300	1,600	1,500	1,600	2,100	2,500	2,700	2,600
8550 - Training Expense	3,900	800	800	400	500	200	200		-100	200
8600 - Salaries Expense- Office	6,300	1,000	800	800		900	700	400	100	200
4066 - Sales - Measured Work	16,700	1,700	1,700	1,400	1,200	1,400	1,100	900	1,200	1,400
4067 - Sales - Actual Burden	19,100	1,300	1,700	1,400	1,600	2,200	1,800	1,400	1,100	1,300
4068 - Sales - Project Fees	13,000	1,200	1,600	1,300	1,400	1,400	1,500	1,200	900	600
4069 - Sales - Project ODC	15,000	1,250	1,250	1,250	1,250	1,250	1,250	1,250	1,250	1,250
4091 - Sales - Role Labor	-8,100	-100	-300	-600	-700	-900	-800	-700	-900	-700
4092 - Sales - Subcontract	7,100	500	400	700	900	600	800	1,000	700	300
4093 - Sales Recognized	-8,000	-100	-100	-400	-800	-800	-600	-700	-1,000	-700
4094 - Sales - Provisional Burden	12,300	700	800	1,100	800	900	900	1,300	1,000	900
6010 - Advertising and Marketing	18,300	1,800	2,100	2,100	2,200	1,600	1,800	1,500	1,400	1,200
6011 - Marketing Material/Samples	9,700	1,200	1,400	1,500	1,600	1,300	1,000	700	600	300
6012 - Marketing Campaign Collateral	19,500	500	900	900	1,200	1,800	2,000	1,700	1,800	2,200
6013 - Marketing Travel Cost	9,700	600	800	500	700	700	1,000	900	1,100	900
6014 - Marketing Stand Costs	21,500	800	1,200	1,200	1,400	1,400	1,900	2,000	2,400	2,100
6050 - Commissions and Fees Expense	18,900	1,300	1,600	1,600	1,600	1,700	1,500	1,600	1,800	1,600
6000 - Default Purchase Expense	25,200	1,300	1,800	1,500	1,600	1,900	2,300	2,200	2,400	2,200
6633 - Freight Recovery	2,400	400	200	100	-200	200	500	300	100	-200

Organization Hierarchy

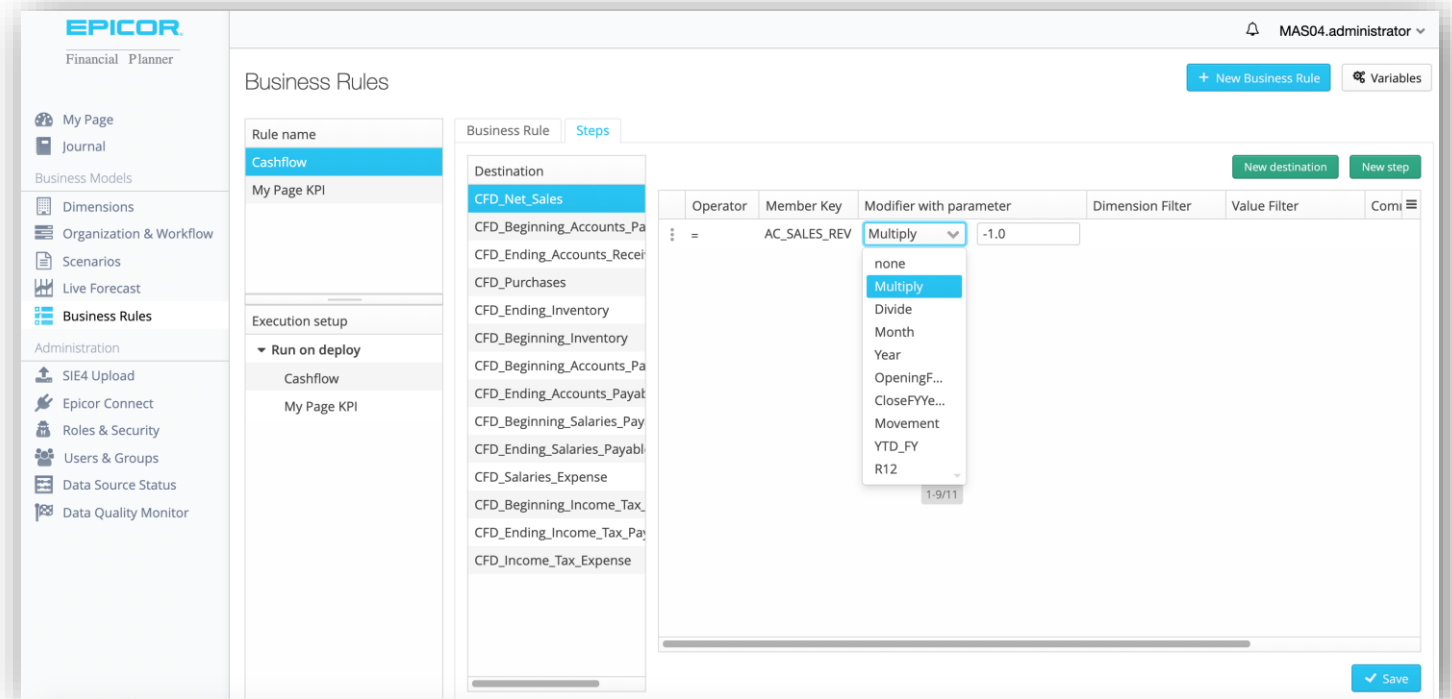
Unified hierarchy management with security, workflow, access and distribution

- ▶ Define organization hierarchy
 - Easy to view historical hierarchies
- ▶ Define workflow with the attached organization
 - Easy to view historical hierarchies
- ▶ Set access rights within the workflow position for the specific task
- ▶ Delegate tasks and rights from one position to another efficiently



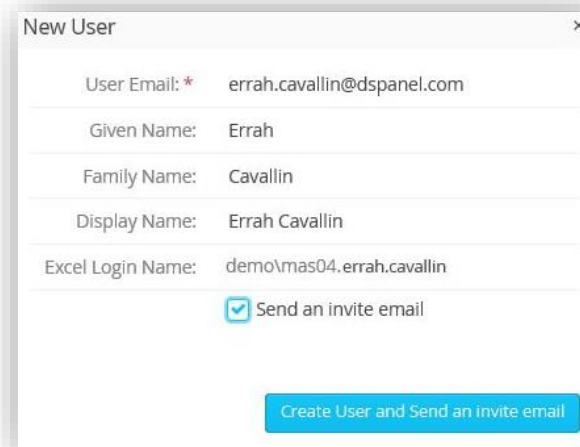
Automation with Business Rules

- ▶ Automate a complex task with rules
- ▶ Create advanced business rules in a simple way
- ▶ Multiple pre-built rules such as cash flow, consolidation, and FX
- ▶ Supports complex HR calculation

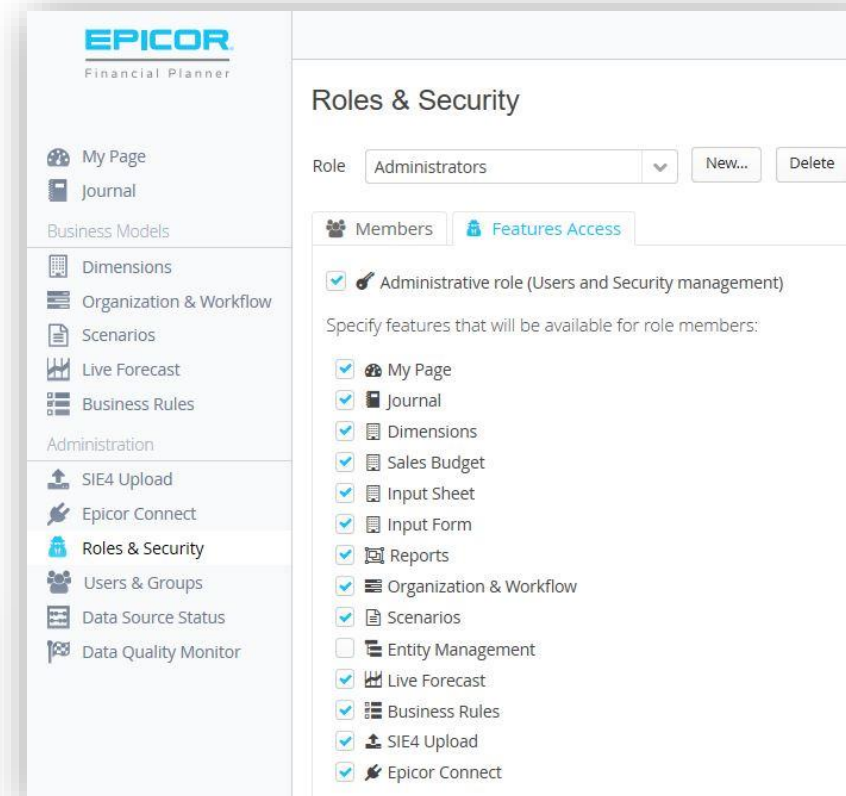
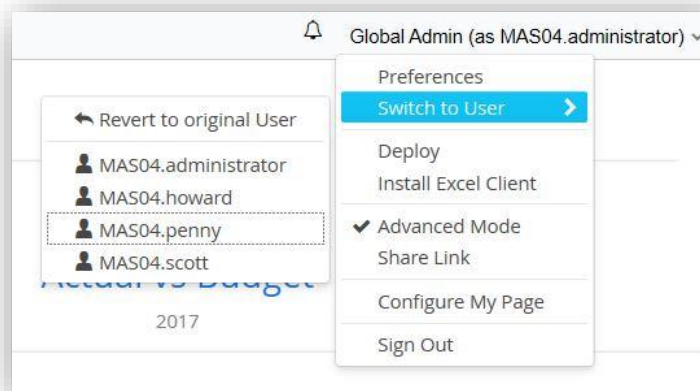


Simple User Management

- ▶ Easy to “Invite” users
- ▶ Impersonate another user for secure support
- ▶ Give access only to what is needed for a specific task
- ▶ Restrict access to data at any level
- ▶ Reduce the number of reports and input sheets



A screenshot of the 'New User' form in the Epicor Financial Planner. The form contains the following fields: 'User Email' (errah.cavallin@dspanel.com), 'Given Name' (Errah), 'Family Name' (Cavallin), 'Display Name' (Errah Cavallin), and 'Excel Login Name' (demo\mas04.errah.cavallin). There is a checkbox for 'Send an invite email' which is checked. A blue button at the bottom right says 'Create User and Send an invite email'.



A screenshot of the 'Roles & Security' settings page in the Epicor Financial Planner. The page has a sidebar on the left with navigation links: My Page, Journal, Business Models, Dimensions, Organization & Workflow, Scenarios, Live Forecast, Business Rules, Administration, SIE4 Upload, Epicor Connect, Roles & Security (highlighted), Users & Groups, Data Source Status, and Data Quality Monitor. The main content area is titled 'Roles & Security'. It has a 'Role' dropdown set to 'Administrators' and buttons for 'New...' and 'Delete'. Below this are tabs for 'Members' and 'Features Access'. Under 'Features Access', there is a checkbox for 'Administrative role (Users and Security management)' which is checked. Below this is a section 'Specify features that will be available for role members:' with a list of features: My Page, Journal, Dimensions, Sales Budget, Input Sheet, Input Form, Reports, Organization & Workflow, Scenarios, Entity Management, Live Forecast, Business Rules, SIE4 Upload, and Epicor Connect. Most of these are checked.

Our Customers

Global



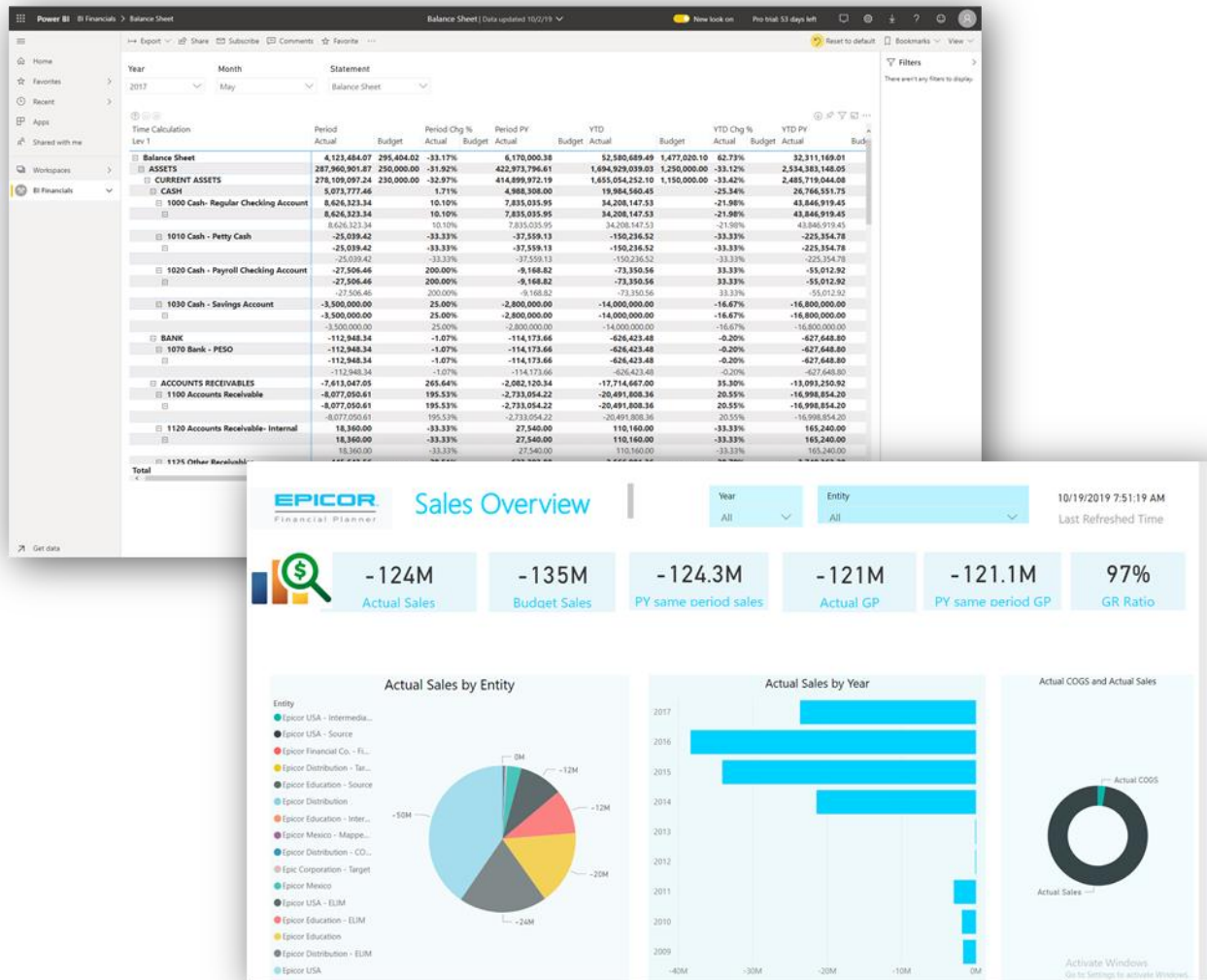
Middle
Market

New Features

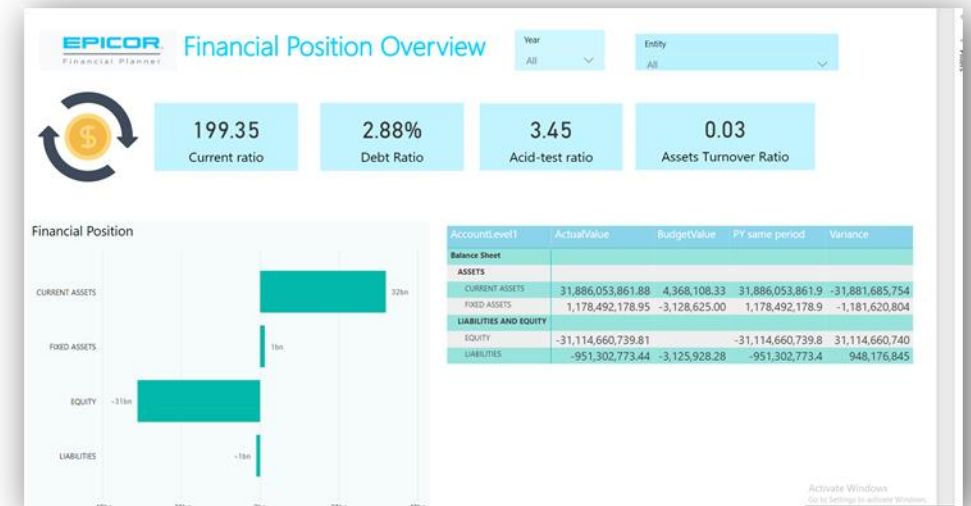
New Features

- ▶ My EFP Home Page
- ▶ Improved web reports
- ▶ New Business Rules Engine
 - Simpler to use
 - Faster and more powerful
- ▶ Journal
 - Improved general journal handling
- ▶ Live Forecast
 - More straightforward forecasting process than R12
- ▶ Better status information on synchronized data
- ▶ E-report Freeze
 - Possibility to lock preliminary reports for specific users
 - Possibility to lock the final report
 - Option to lock the report for specific users when the finance team is working on closing the books
 - When they are closed, the reports can be automatically refreshed

EFP and Power BI Support



- ▶ Direct support for Power BI and Tabular cubes in the cloud
- ▶ Simpler roll out to users
- ▶ Fast analysis
- ▶ Possible to integrate with in-house Power BI models



Live Demo

Content Packs / Trial License

Available Options

What's in the box for EFP 2.0 SaaS?

- ▶ **EFP Basic**
 - GL budgets, forecasts and reports
 - Workflow processes, driver-based budgeting
 - Automation of Income Statement, Balance Sheet & Cash Flow, 1 legal entity
- ▶ **EFP Standard**
 - EFP Basic + advanced Excel input sheets, 10 legal entities
- ▶ **EFP The Works**
 - EFP Standard + all packs, business process modelling, unlimited legal entities

See the EFP Fact Sheet for further information

Epicor® Financial Planner®

EPICOR

Product

- ▶ Epicor® ERP
- ▶ Epicor® iScala®
- ▶ Epicor® Enterprise™

Benefits

- ▶ Cloud-based product supporting on-premises deployments
- ▶ Workflow-based financial budget planning
- ▶ Perform what-if analysis to immediately see the impact of business decisions
- ▶ Create and track driver-based plans while considering periodic trends
- ▶ Compare actuals versus budgets and analyze variances
- ▶ Drill through underlying transaction details, trend analysis, filters, and multidimensional hierarchies
- ▶ Reduce time spent on budgeting and forecasting and lead time business to board by 50–90%
- ▶ Improve team collaboration and communication

Redefining the Financial Planning and Analysis Process for Your Organization

Epicor Financial Planner (EFP) brings you a truly revolutionary financial planning and analysis (FP&A) solution that promises not to take away significant time from your finance team.

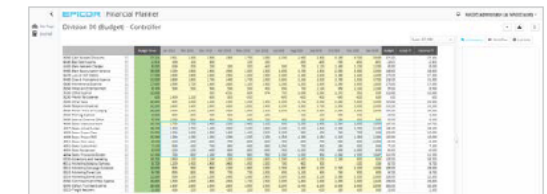
After the five-minute installation and setup, you get out-of-the-box actuals, budgets, and live forecasts. You can even create budget reports from scratch in just a few minutes. To ensure your business can react to market stressors, EFP offers you a radically improved way of working with financial planning and analysis.

EFP streamlines and automates time-consuming, error-prone tasks for your finance team so you can focus on high value-yielding responsibilities. It uses a pragmatic and intelligent workflow that makes working and collaborating quick and easy.

You can now make informed decisions using the valuable business insights you will gain from your FP&A process, and you can improve your finance team's efficiency while keeping software costs to a minimum.

Epicor Financial Planner Is:

- ▶ Multicompany
- ▶ Multicurrency
- ▶ Multisystem
- ▶ Multi-scenario
- ▶ Prepackaged with finance logic such as cash flow, CAPEX, and consolidation
- ▶ Easily scalable
- ▶ ERP system or line-of-business system agnostic



Content Packs

What optional add-ons are available for EFP 2.0 SaaS?

▶ EFP Advanced Financials Pack

- Accounts Receivable, Accounts Payable
- Short Term Cash Flow, Journal drilldown
- Enhanced Financial Consolidation

▶ EFP Sales Pack

▶ EFP Profitability Analysis

▶ EFP Additional Legal Entity

See the EFP Content Pack Guide for further information

Epicor Financial Planner Content Packs

Product

- ▶ Epicor® ERP
- ▶ Epicor iScala®
- ▶ Epicor Enterprise®

Benefits

- ▶ Automatically populate data driven by real-time events
- ▶ Drill up, down, and through any transactions to investigate or better understand specific figures
- ▶ Generate a seamless flow of information across multiple systems
- ▶ Streamline the capital asset planning process for your organization
- ▶ Monitor the sales process and interface it properly with the financial forecasting process
- ▶ Get full visibility into your organization's profitability
- ▶ Start small and add additional legal entities when ready

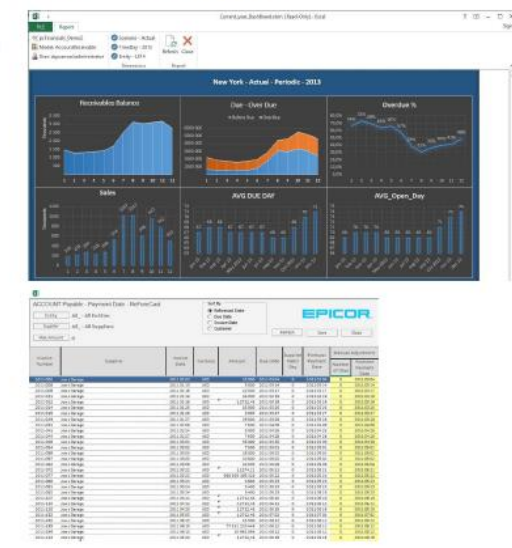
With Epicor Financial Planner (EFP), you have the ability to extend your financial planning and analysis solution with enhanced capabilities that add value to your business processes.

The add-on packages of Epicor Financial Planner include the following modules:

EFP Advanced Financials Pack

Accounts Receivable (AR) and Accounts Payable (AP)

- ▶ Automatic aging calculation on your own selections
- ▶ Adjustable aging intervals
- ▶ Automatic forecast payment calculations on your own selection
- ▶ Management of outstanding and historical receivables
- ▶ Analysis and forecasting of payment habits from customers
- ▶ Manual changing and adjustment of payment dates to reforecast payment date
- ▶ Detailed single or multicompany management overview with instant response time
- ▶ Simple selections and filter capabilities for further investigation
- ▶ Automatic payables history and management of outstanding and historical payables
- ▶ Easier and structured review of invoices to ensure billings are in accordance with contracts, purchase orders, work orders, and packing slips



The screenshot displays the Epicor Financial Planner interface. At the top, it shows the 'New York - Actual - Periods: 2013' view. Below this, there are several charts: 'Receivable Balance', 'Sales', 'Aging Due Day', and 'Aging Open Day'. The bottom section features a detailed data table with columns for 'Account', 'Period', 'Balance', 'Debit', 'Credit', 'Total', 'Variance', and 'Variance %'. The table lists various accounts and their corresponding financial data for the year 2013.

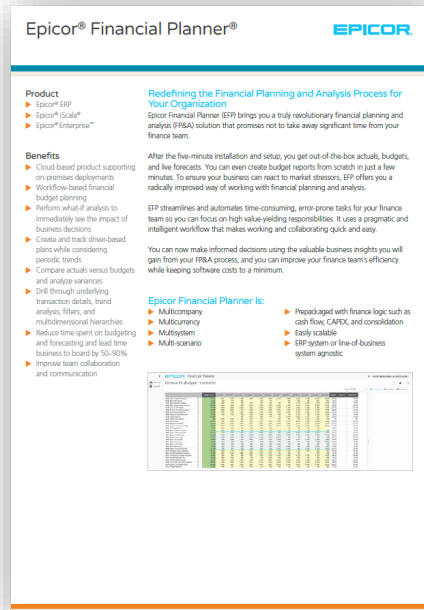
Try EFP!

- ▶ Ask you Sales Account Manager for a trial license
 - They will need your REST URL
 - You can try EFP with your test data in the cloud immediately
- ▶ Either the Epicor Sales team / Channel Sales partners / DSPanel can help with:
 - Determining your business need – initial meeting
 - Arranging an individual demo session
 - Giving you a short introduction on how to use the trial version

Next Steps

Epicor Financial Planner (EFP) Resources

- ▶ [Landing page](#)
- ▶ [Fact Sheet](#)
- ▶ [Content Pack Guide](#)



Epicor® Financial Planner®

Product

- ▶ Epicor® ERP
- ▶ Epicor® Cloud®
- ▶ Epicor® Enterprise™

Benefits

- ▶ Cloud-based product supporting on-premise deployment
- ▶ Workflow-based financial budget planning
- ▶ Perform what-if analysis to immediately see the impact of business decisions
- ▶ Create and track drive-based plans while considering periodic trends
- ▶ Compare actuals versus budgets and analyze variances
- ▶ Drill through underlying transaction details, trend analysis, filters, and multidimensional hierarchies
- ▶ Reduce time spent on budgeting and forecasting and lead time business to build by 50-100%
- ▶ Improve team collaboration and communication

Redefining the Financial Planning and Analysis Process for Your Organization

Epicor Financial Planner (EFP) brings you a truly revolutionary financial planning and analysis (FP&A) solution that promises not to take away significant time from your finance team.

After the five-minute installation and setup, you get out-of-the-box actuals, budgets, and live forecasts. You can even create budget reports from scratch in just a few minutes. To ensure your business can react to market drivers, EFP offers you a radically improved way of working with financial planning and analysis.

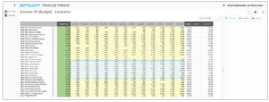
EFP streamlines and automates time-consuming, error-prone tasks for your finance team so you can focus on high-value yielding responsibilities. It uses a pragmatic and intelligent workflow that makes working and collaborating quick and easy.

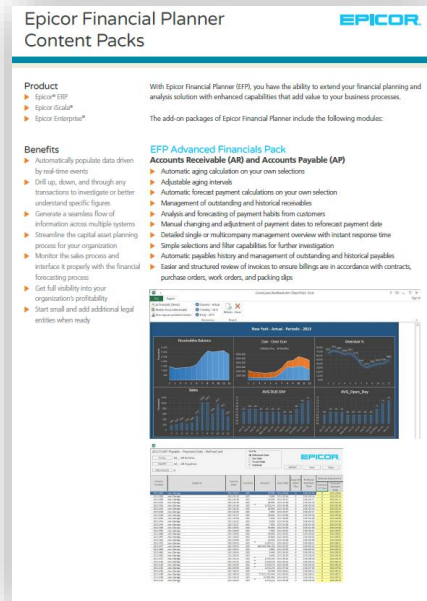
You can now make informed decisions using the valuable business insights you will gain from your FP&A process, and you can improve your finance team's efficiency while keeping software costs to a minimum.

Epicor Financial Planner is:

- ▶ Multi-company
- ▶ Multi-currency
- ▶ Multi-system
- ▶ Multi-scenario

- ▶ Prepackaged with finance logic such as cash flow, CAPX, and consolidation
- ▶ Easily scalable
- ▶ ERP system or line-of-business system agnostic





Epicor Financial Planner Content Packs

Product

- ▶ Epicor® ERP
- ▶ Epicor® Cloud®
- ▶ Epicor® Enterprise™


Benefits

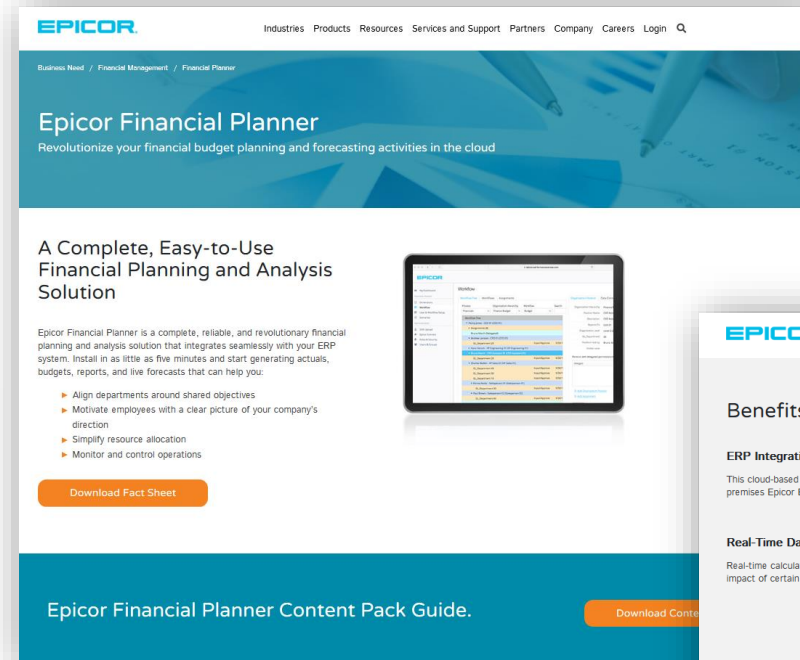
- ▶ Automatically populate data driven by real-time events
- ▶ Drill up, down, and through any transaction to investigate or better understand specific figures
- ▶ Generate a seamless flow of information across multiple systems
- ▶ Streamline the capital asset planning process for your organization
- ▶ Monitor the sales process and interface it properly with the financial forecasting process
- ▶ Get full visibility into your organization's profitability
- ▶ Start small and add additional legal entities when ready

EFP Advanced Financials Pack

Accounts Receivable (AR) and Accounts Payable (AP)

- ▶ Automatic aging calculation on your own selection
- ▶ Adjustable aging intervals
- ▶ Automatic forecast payment calculations on your own selection
- ▶ Management of outstanding and historical receivables
- ▶ Analysis and forecasting of payment habits from customers
- ▶ Manual changing and adjustment of payment dates to forecast payment date
- ▶ Detailed single or multi-company management overview with instant response time
- ▶ Simple selections and filter capabilities for further investigation
- ▶ Automatic payable history and management of outstanding and historical payable
- ▶ Easier and structured review of invoices to ensure billings are in accordance with contracts, purchase orders, work orders, and packing slips





EPICOR

Industries Products Resources Services and Support Partners Company Careers Login

Business Need / Financial Management / Financial Planner

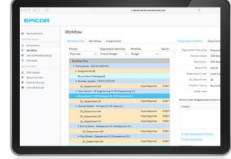
Epicor Financial Planner

Revolutionize your financial budget planning and forecasting activities in the cloud

A Complete, Easy-to-Use Financial Planning and Analysis Solution

Epicor Financial Planner is a complete, reliable, and revolutionary financial planning and analysis solution that integrates seamlessly with your ERP system. Install in as little as five minutes and start generating actuals, budgets, reports, and live forecasts that can help you:

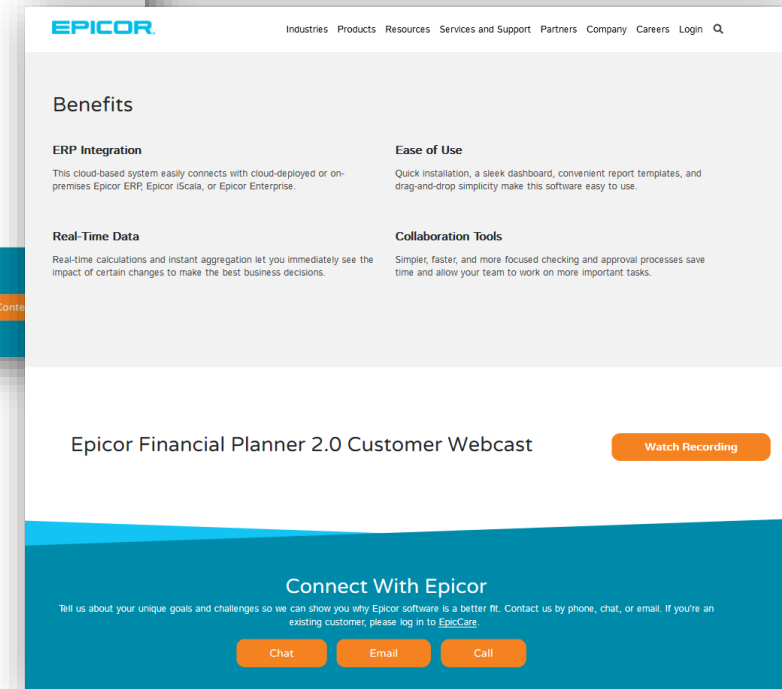
- ▶ Align departments around shared objectives
- ▶ Motivate employees with a clear picture of your company's direction
- ▶ Simplify resource allocation
- ▶ Monitor and control operations



[Download Fact Sheet](#)

Epicor Financial Planner Content Pack Guide.

[Download Content Pack Guide](#)



EPICOR

Industries Products Resources Services and Support Partners Company Careers Login

Benefits

ERP Integration

This cloud-based system easily connects with cloud-deployed or on-premises Epicor ERP, Epicor iScala, or Epicor Enterprise.

Ease of Use

Quick installation, a sleek dashboard, convenient report templates, and drag-and-drop simplicity make this software easy to use.

Real-Time Data

Real-time calculations and instant aggregation let you immediately see the impact of certain changes to make the best business decisions.

Collaboration Tools

Simpler, faster, and more focused checking and approval processes save time and allow your team to work on more important tasks.

Epicor Financial Planner 2.0 Customer Webcast

[Watch Recording](#)

Connect With Epicor

Tell us about your unique goals and challenges so we can show you why Epicor software is a better fit. Contact us by phone, chat, or email. If you're an existing customer, please log in to EpicCare.

[Chat](#) [Email](#) [Call](#)

Questions and Answers

Please enter your questions in the Q&A window





Thank You!

**Contact your Epicor Customer Account Manager
for further details!**

Ask for a PDF copy of this presentation!

